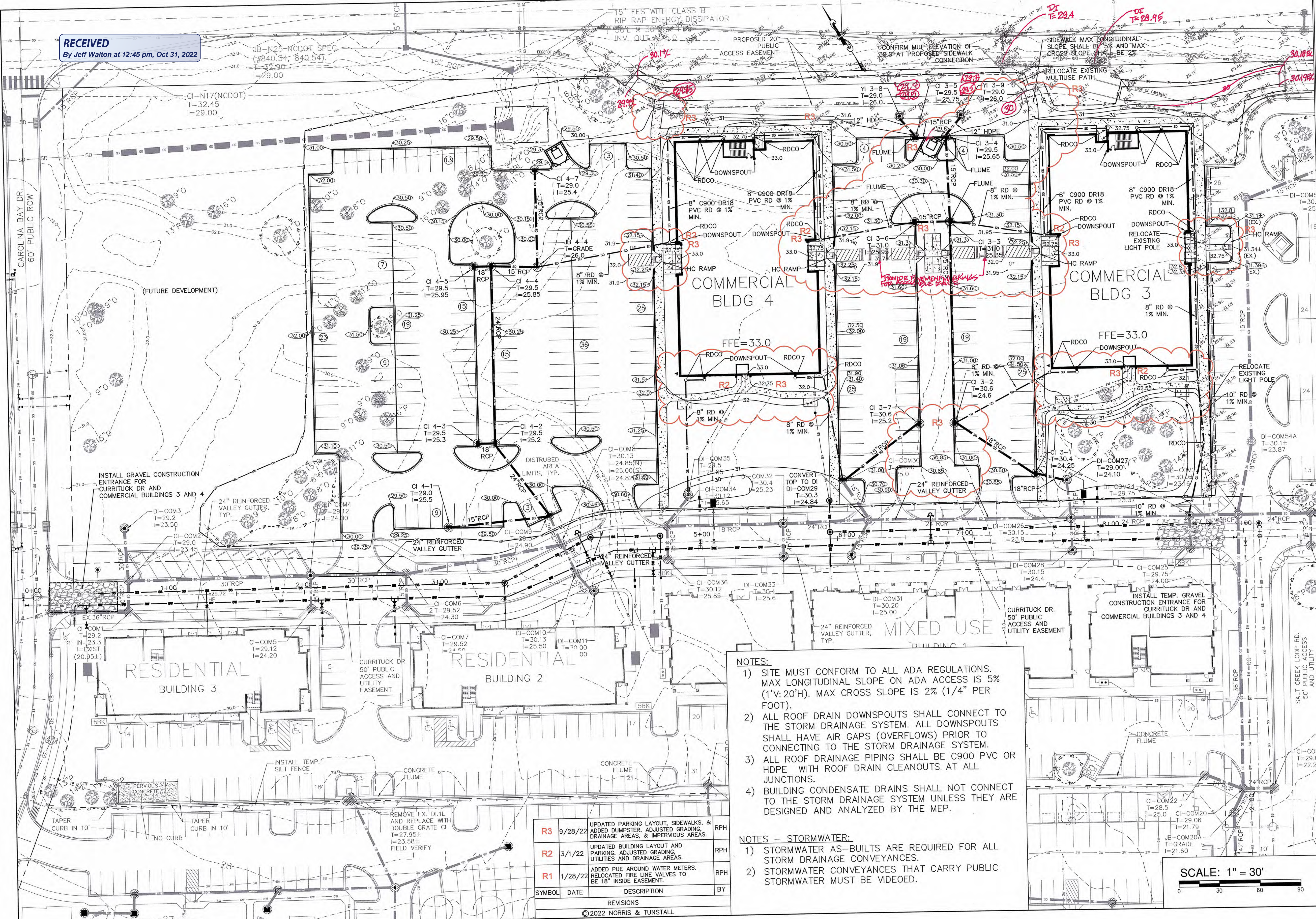


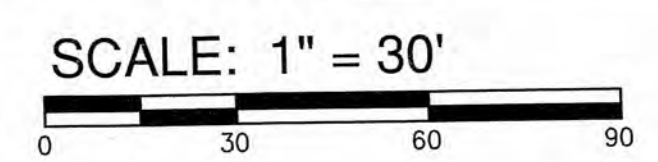
RECEIVED
By Jeff Walton at 12:45 pm, Oct 31, 2022



- NOTES:**
- 1) SITE MUST CONFORM TO ALL ADA REGULATIONS. MAX LONGITUDINAL SLOPE ON ADA ACCESS IS 5% (1\"/>

- NOTES - STORMWATER:**
- 1) STORMWATER AS-BUILTS ARE REQUIRED FOR ALL STORM DRAINAGE CONVEYANCES.
 - 2) STORMWATER CONVEYANCES THAT CARRY PUBLIC STORMWATER MUST BE VIDEOED.

SYMBOL	DATE	DESCRIPTION	BY
R3	9/28/22	UPDATED PARKING LAYOUT, SIDEWALKS, & ADDED DUMPSTER. ADJUSTED GRADING, DRAINAGE AREAS, & IMPERVIOUS AREAS.	RPH
R2	3/1/22	UPDATED BUILDING LAYOUT AND PARKING. ADJUSTED GRADING, UTILITIES AND DRAINAGE AREAS.	RPH
R1	1/28/22	ADDED PUE AROUND WATER METERS. RELOCATED FIRE LINE VALVES TO BE 18\"/>	RPH
REVISIONS			
©2022 NORRIS & TUNSTALL			



GRADING, DRAINAGE AND EROSION CONTROL PLAN
AUTUMN HALL COMMERCIAL BLDG 3&4
1202 EASTWOOD ROAD
WILMINGTON, NC
NEW HANOVER COUNTY

DEVELOPER
WEB TRASK C/O MIKE BROWN
CAPE FEAR COMMERCIAL, LLC
6336 OLEANDER DRIVE, SUITE 1
WILMINGTON, NC 28403
344-1010 (P) 622-4657 (CELL)

NORRIS & TUNSTALL
CONSULTING ENGINEERS P.C.
1900 EASTWOOD RD., SUITE #11
WILMINGTON, NC 28405
PHONE (910) 345-9653

License #C-3641
21117
DES. JST
CHK. JPN
DRWN. DCC
DATE 10/26/22

C1